

Portable Compressors **MOBILAIR M 43**

With the world-renowned SIGMA PROFILE 

Free air delivery 4.2 m³/min



Worldwide sales and servicing network



As one of the world's largest compressor manufacturers, KAESER KOMPRESSOREN is represented throughout the world by a comprehensive network of branches, subsidiary companies and authorised partners in over 60 countries.

With innovative products and services, Kaeser Kompressoren's experienced consultants and engineers help customers to enhance their competitive edge

by working in close partnership to develop progressive system concepts that continuously push the boundaries of performance and compressed air efficiency. Moreover, the decades of knowledge and expertise from this industry-leading system provider are made available to each and every customer via the Kaeser group's global computer network.

These advantages, coupled with KAESER's worldwide service organisation, ensure that all products operate at the peak of their performance at all times and provide maximum availability.

Maximum versatility

The MOBILAIR 43 is the ideal choice for powering equipment such as breakers and impact borers. Meticulous construction and premium quality components ensure trouble-free operation in ambient temperatures ranging from -10 °C to +50 °C. Moreover, low temperature versions are available for use in temperatures as low as -25 °C. Versatility is further enhanced by the chassis, as it can be equipped with or without an overrun brake and is available with a fixed or height adjustable tow bar. Stationary versions can be installed either on skids or machine mountings (all stationary systems feature a metal enclosure).



**The perfect energy-saving combination:
Kubota engines and KAESER airends**

The M 43 features a specially designed energy-saving SIGMA profile airend, which is directly driven by a water-cooled four-cylinder Kubota diesel engine. Direct drive eliminates the transmission losses associated with other systems, consequently providing more air for less fuel.

Separate air filters for engine and compressor: The air filters are specially tailored to suit required air demand and therefore ensure dependable system operation. A further important design detail is the electric fuel pump which enables quick and simple deaeration of the diesel lines. Laborious manual pumping is therefore eliminated.

MOBILAIR M 43

Lightweight – Quiet – Powerful



Image shows M 43 with optional G1 ball valve

Lightweight

Powerful doesn't necessarily mean heavy. The M43 has a low operational weight of less than 750 kg and is therefore incredibly simple to manoeuvre and transport. Moreover, it's 80 litre diesel fuel capacity ensures that the M 43 has more than enough power available to last an entire work shift.



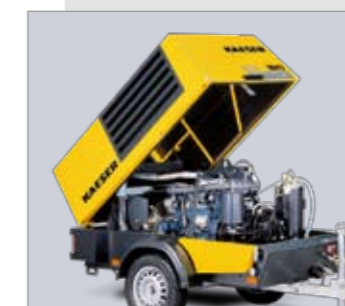
Service Friendly

The enclosure opens to provide excellent component access and therefore greatly simplifies all servicing and maintenance tasks.



PE enclosure

Made from rotation-sintered polyethylene, the double-walled sound enclosure ensures long-term value retention and is both corrosion and scratch-resistant.



Metal enclosure

The sound-proofed all-steel enclosure ensures long-term corrosion resistance and value retention thanks to high quality zinc priming and tough powder coating. Stationary systems are always equipped with metal enclosures.



Alternative colours

The corrosion- and scratchproof rotation sintered polyethylene enclosure is also available in the following colours:
Blue - Equivalent RAL 5017
Green - Equivalent RAL 6024
Red - Equivalent RAL 3020
Orange - Equivalent RAL 2009
Other colours for the enclosure and custom paintwork for metal components are available upon request.



User-friendly operation

Operation is made simple via user-friendly icons and a single start switch with pre-heat function. The unit also features fully automatic monitoring and shutdown, whilst a pressure gauge and airend temperature display enable all information to be viewed at a glance.



Patented Anti-Frost Control

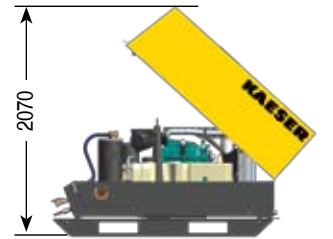
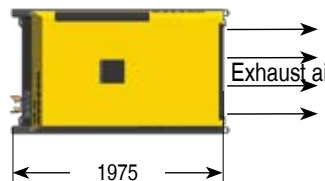
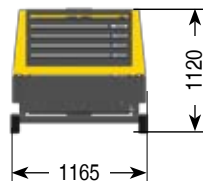
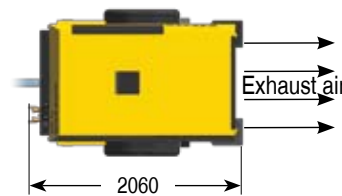
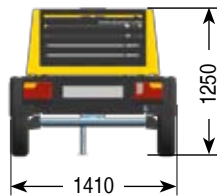
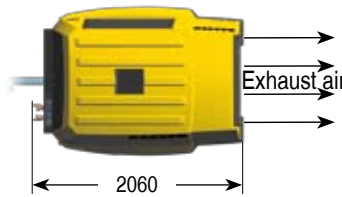
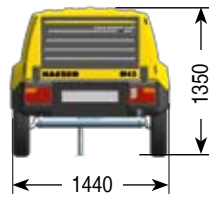
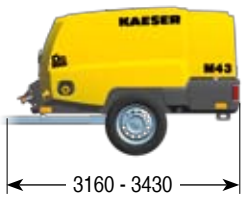
Specially developed for portable compressors, the patented Anti-Frost Control automatically adjusts operating temperature in relation to ambient. This prevents air tools from freezing up and significantly extends their service life.



Hose reel

The optional pre-installed hose reel holds 20 m of lightweight hose which does not have to be fully reeled out for operation. As the hose is installed within the compressor unit, this not only enhances hose service life and availability, but also protects it from damage (splitting, stretching, being run over) and contamination.

Dimensions



Technical Specifications

Model	Compressor unit		4-cylinder diesel engine (water-cooled)					Complete unit				
	Free air delivery m ³ /min	Working pressure bar	Make	Model	Rated engine power kW	Speed at full load rpm	Idling speed rpm	Fuel tank capacity l	Operational weight kg	Sound power level dB(A)*	Sound pressure level dB(A)**	Air outlet
M 43	4.2	7	Kubota	V1505-T	30.1	2800	2200	80	730	< 98	69	2 x G $\frac{3}{4}$

*) Guaranteed sound power level to directive 2000/14/EU – **) Surface sound pressure level to ISO 3744, (r = 10 m)



KAESER Kompressoren GmbH

P.O. Box 2143 – 96410 Coburg – GERMANY – Tel: +49 9561 640-0 – Fax: +49 9561 640130
www.kaeser.com – e-mail: productinfo@kaeser.com